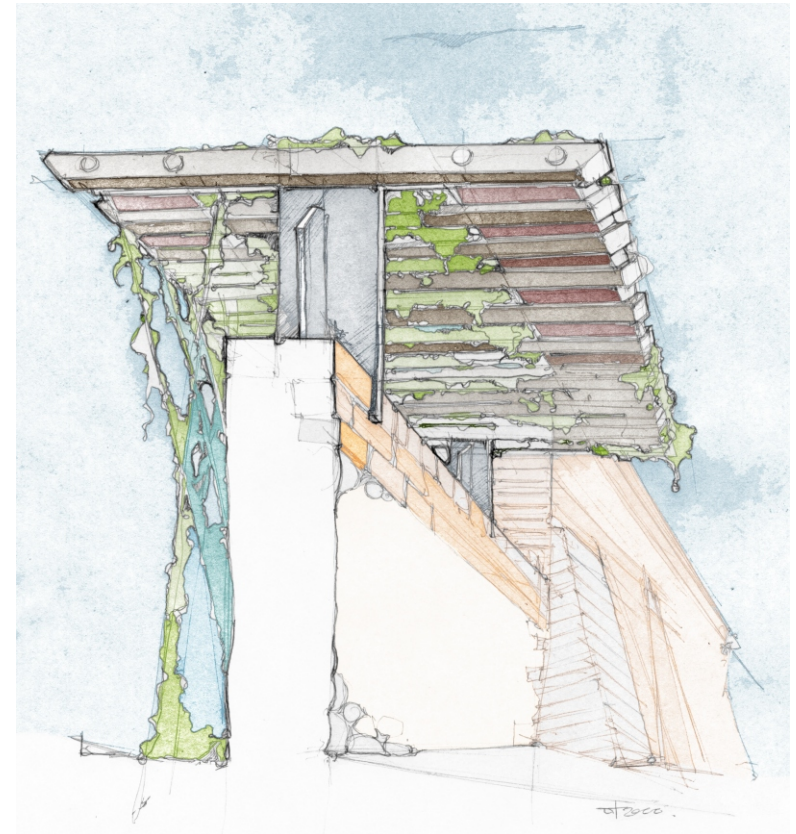
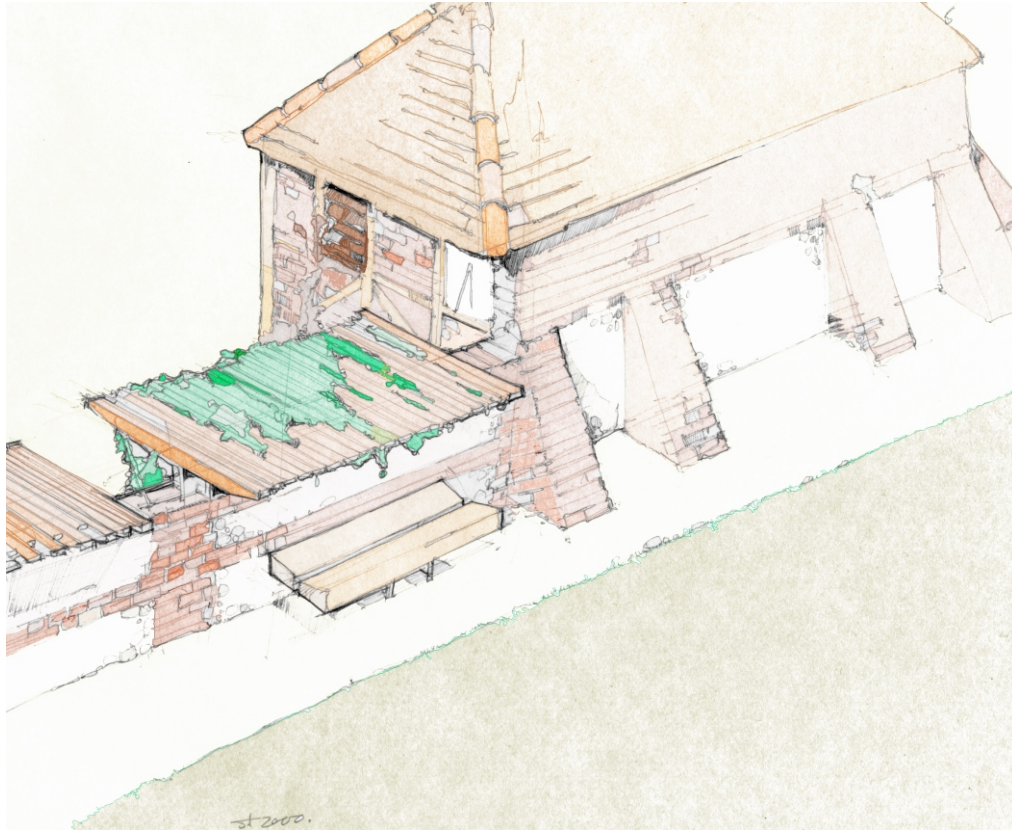


S H E L T E R S   T O   O L D   J O R D O N S   G U E S T   H O U S E



Overhead panels are formed by threading machined timber sections along four stainless steel rods. Using the existing wall's coping as a support these panels offer shade to both the terrace and the sunken garden behind. Climbers are grown in the sunken garden and are trained up cables to the overhead canopy, adding visual interest to the gardens back wall.

