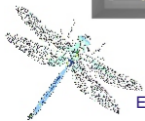
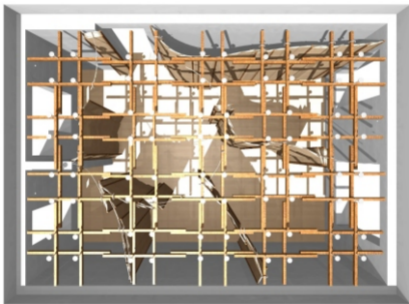


Entry in an open international competition to design a compact interior to a New York apartment, hosted on the Jovonto website.

Concepts were developed in 3D CAD, posted, modified & re-posted.

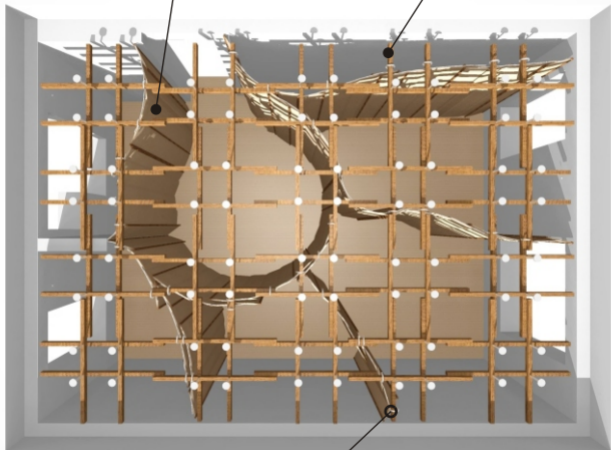


© Justin Tunley 2011 . NB Teasel  
+44 (0) 7905 822 381

E: [justin@tunley.co.uk](mailto:justin@tunley.co.uk) . W: [www.tunley.co.uk](http://www.tunley.co.uk)

Relocatable screens

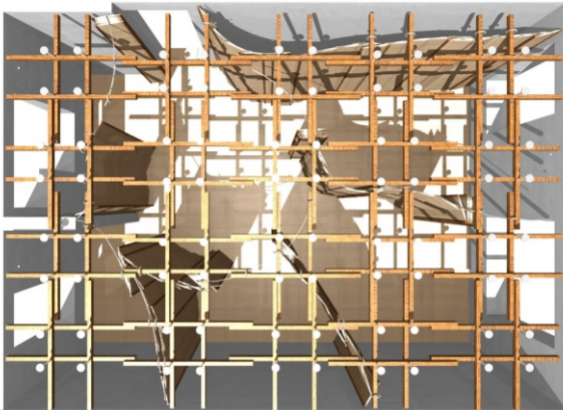
Internal Pergola



Relocatable suspension hook

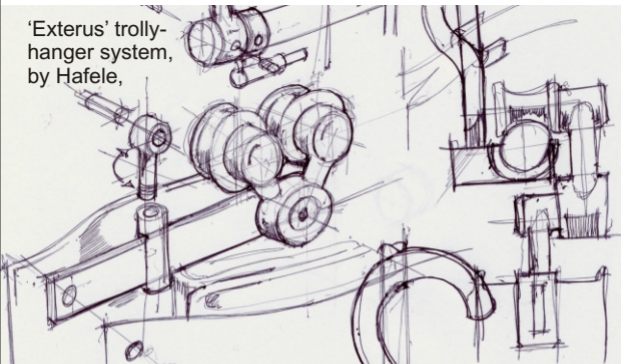
KEY-COMPONENTS

# OPEN PARTITIONS

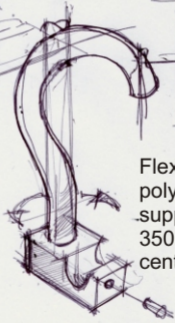


Here our nominal initial arrangement is partially opened up, to allow circulation between different segments of the apartment. This is archived by simply using individual segments as sliding doors.

'Exterus' trolley-hanger system, by Hafele,



Folded 'Hawa' sound-absorbing system, sandwiched between resin impregnated bamboo weave



Flexible 20mm polyester rod, support hooks at 350mm nominal centres.

Storage

Kitchen

Home  
Office

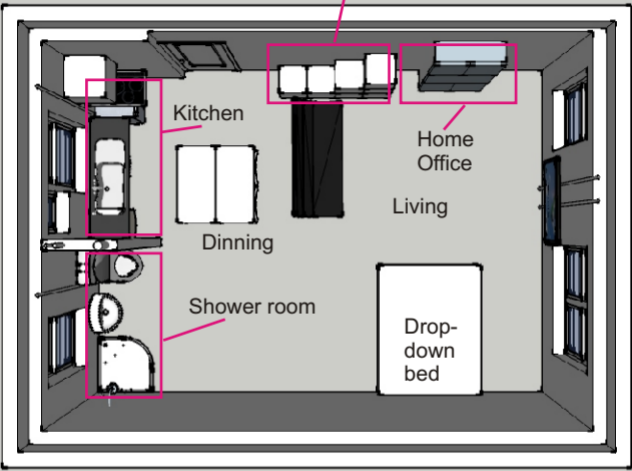
Living

Dinning

Shower room

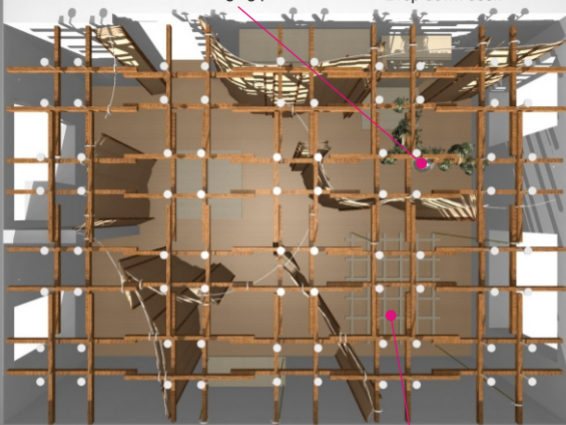
Drop-  
down  
bed

Revised general arrangement-  
Kitchen in North- West Corner,  
Shower room in South- West Corner.



Hanging planter

Drop down desk



Base for suspended bed

Many elements other than screening may be suspended from the internal pergola- a stowable bed, shelves, or hydroponic planters.