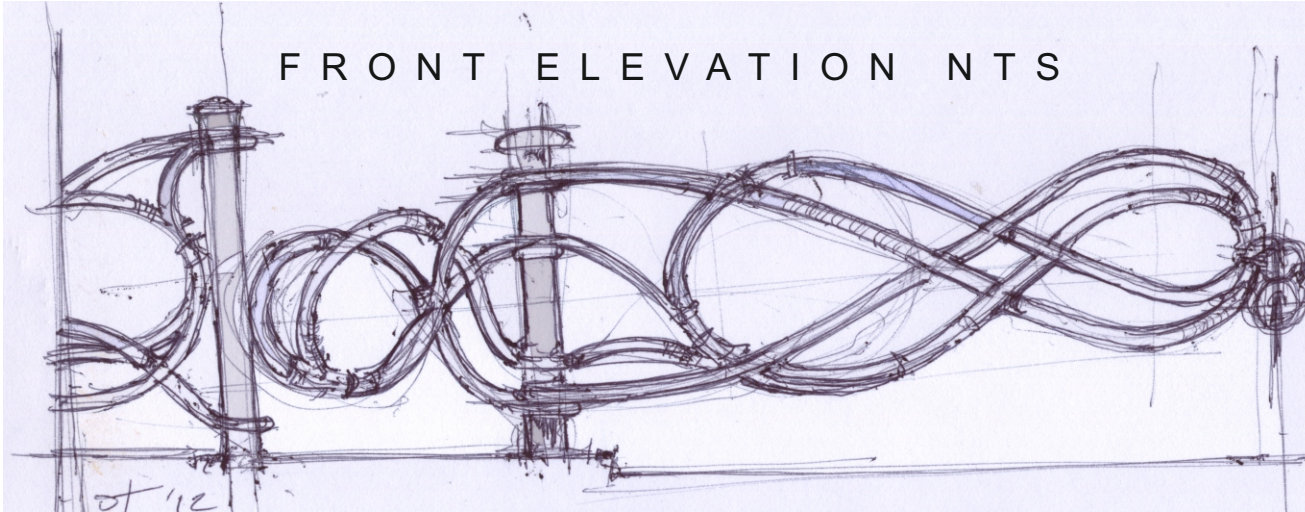


PROPOSED GATES TO FORMER ROPE-SHED

FRONT ELEVATION NT S



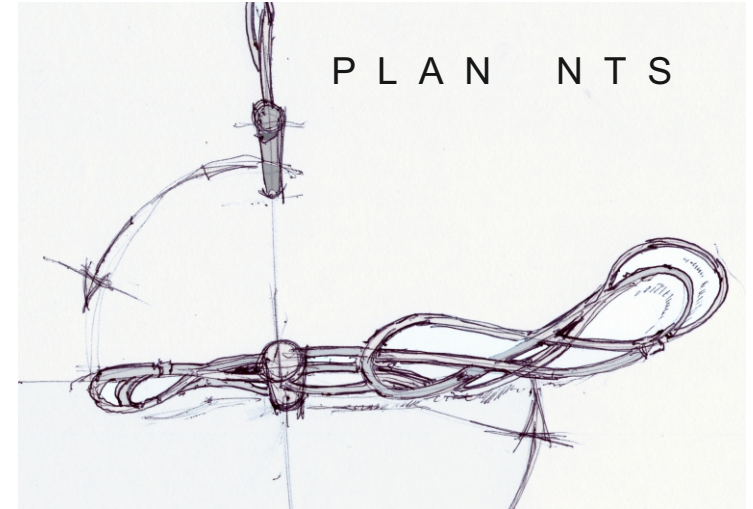
Fixed side-wings
to post adjacent
building.

Semi-rigid
side-gate

Rotating post.

Central padlock keeps
cables taught.

PLAN NT S



Option to half open (half drape)
the main gates, while opening the
side gates.

Given the sites history in rope manufacture, stainless steel multi-core rope would make an ideal medium for highly robust & functional decorative gates.
Rather than attempting to engineer a wholly rigid structure, the materials massive strength in tension would form both a highly effective barrier & an object of interest.
In this example a Garick Bend (traditional used for joining two heavy ropes) has been used as a motif, although there are numerous other things you can say or do with rope.

